

# January Take and Make Snowman





# January

## Take and Make

### Snowman

3 snowballs (2 same size and 1 little smaller)

Cardstock (base)

Snow blanket to cover base

2 - 8 inches long Floral stem

Small ornament (ball with stars)

2 felt circles and 1 straight felt (hat)

Ribbon (for hat)

Ivy (for hat)

Berries (for hat)

Carrot Nose

2 beads (for eyes)

2 buttons

Black Thread (for mouth)

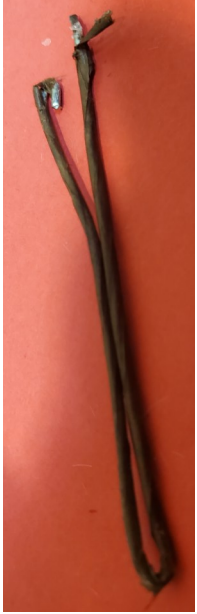
Scarf



1. Glue snow blanket to cardstock base. Trim if needed
2. Glue two bigger balls together and to the base.
3. Glue ends together of the rectangle to make a cylinder.
4. Put glue around the one end of the cylinder and place the small circle on the end.
5. Then put glue on the other end of cylinder and place it in the middle of the bigger circle.

6. Put glue at the seam close to the brim of the hat; wrap the ribbon around the hat. You may need to secure it with more glue.
7. Glue on greenery and berries.





8. On the smaller ball, glue on nose and eyes (there may be a hole that can be for the nose).
9. Place the mouth closer to the nose to make room for the scarf. Put a dot of glue for the two corners of the mouth and at the bottom. Trim off excess string.
10. Fold floral stem in half and twist together. Bend the ends in.
11. In one of the stem ends put the ball ornament and bend the end so it will not come off.
12. Shape one of the stems like the picture below and the other into a "u" shape.
13. Make holes for arms and put glue in holes. You may need a filler if you get the hole too big. Some of the snow you trimmed off earlier will work.
14. Glue head on body facing up.
15. Glue hat on head.
16. Glue buttons on middle ball.
17. Wrap scarf around the neck.

